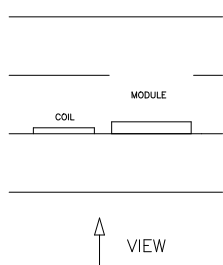


All rights are reserved.
Reproduction in whole or in part is prohibited without
the written consent of the copyright owner.



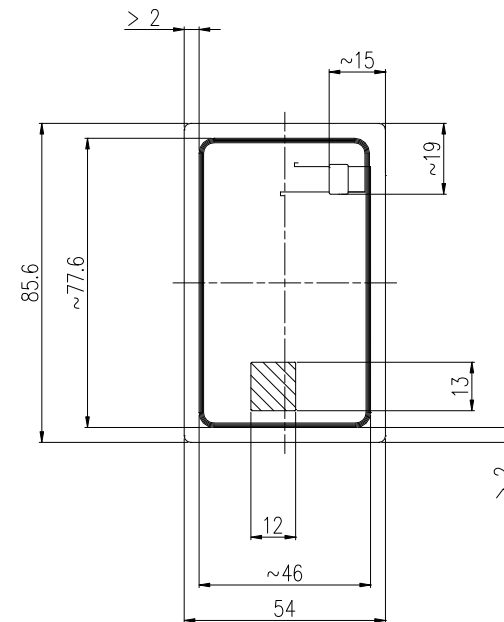
Tato technická dokumentace je duševní vlastnictvím
firmy LUX -Ident s.r.o. a kopírování je možné pouze
se souhlasem vlastníka




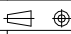
125μm	SABIC, SD8B24 – WHITE
125μm	SABIC, SD8B24 – WHITE
100μm	SABIC, SD8B24 – WHITE
100μm	SABIC, SD8B24 – WHITE
450μm	BEFORE LAMINATION

PR. INLAY THICKNESS 0,42 ± 0,03mm (TYPICAL MEAN VALUE)

SCALE 7:10



HF COIL	WIRE	0,112 mm
	CHIP	Mifare Desfire 8K EV2 MOB6
	fres	16,5 ± 0,5 MHz
	COIL DIM.	77,6 x 46,0 mm
	PITCH	0,30 mm (variable)
	No. of turns	5 (variable)

—								—			
Ks./Bit		Rozmer/Dim.		Norma/Norm		Material		Hmotn/Mass		Poz./Pos.	
Schválil/Certify		A. FRANTA		Presnost/Accuracy		ISO 2768—mK					
Konstr./Design.		R. DOKOUPIL		Tolerovani/Tolerance		ISO 8015					
Kreslil/Draw.		J. VERNER		Datum/Date		15—03—2023					
<div></div>		Promítání/Project.									
		Meritko/Scale		7:20		Index		Zmena/Change		Datum/Date Podpis/Signature	
Typ stroje/Type machine:				V. číslo stroje/ No.:				List/Sheet no:		1	
										Listu/Sheets: 1	
Prelaminated inlay PC EG—oval Mifare Desfire 8K EV2 MOB6 STC 3x5 295x330x0,42mm, foils Sabic, 16MHz, structure C4							ID EGL8CC4_ST5			i01	